

# EK Properties

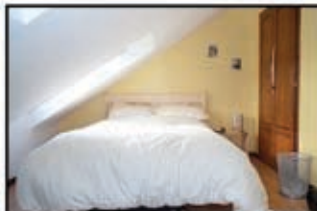
We have been established for over four years and pride ourselves on very high standards and services and this is extended to our properties. Due to our constant and on-going efforts to create a good, clean, comfortable living environment, we find that many of our tenants come to us via personal recommendation, which in itself is a reflection of our company policy.



## Mundella Terrace, Heaton 5 Bed

This area of Heaton is less than a mile from the city centre and due to its close proximity has remained extremely popular with both students and young professionals alike and has excellent bus and metro links into the city centre. The property has undergone a full renovation in 2000 and offers beech laminate flooring throughout, creating a very clean bright décor. The fully fitted kitchen is larger than usually encountered in similar properties and the well thought out positioning of units has added greatly to the overall impression of space. Electrical appliances include washing machine, tumble dryer, fridge/freezer and microwave. Most bedrooms have fitted wardrobes, desks and shelving and are decorated in a warm sunshine yellow colour. The provision of two bathrooms, one on each floor, both fitted with electric showers adds to the desirability of the property.

Rent: £55.00 pppw



## Stratford Road, Heaton 5 Bed

This property is approximately half a mile from both universities and only a few minutes from Heaton Park. The loft has been recently converted to create two additional bedrooms and a bathroom. Both bathrooms have electric showers. Flooring is in beech laminate, creating a very clean bright décor. The kitchen is fully fitted with beech units, complemented by dark marble worktops and stainless steel appliances. Tiling to the kitchen is in a modern terracotta/lemon chequered design. Electrical appliances include washing machine, tumble dryer, microwave, fridge and freezer. There are fitted wardrobes in the attic. The first floor bedrooms have modern pine furniture and all bedrooms have desks. This area is ideally situated to benefit from its close proximity to the City Centre, Heaton, Sandlyford and Jesmond and all they have to offer.

Rent: £58.00 pppw



Call or text for a viewing on: 0797 313 4476  
[www.ekproperties.com](http://www.ekproperties.com)